



FCC TEST REPORT

Client Information:

Applicant: Shenzhen Hui Qi Mei Technology Co., Ltd
Applicant add.: 4B, Area A, Zhong tian xin, No.4, Longping West Road, Longcheng Street, Longgang District, Shenzhen
Brand Name: N/A

Product Information:

Product Name: Mountain Humidifier
Model No.: SLHM0
Derivative model No.:

Test Date: July.25.2019 to Aug.05.2019 Issue Date: Aug.05.2019

Test Standard: FCC Part 15, Subpart B: 2016
ANSI C63.4:2014

Test Result: PASS

Shenzhen iTC Product Testing Co., Ltd.

Issued by: Add. : Room 502, Floor 5, Fuong buliding, No. 3, Dayang road, Qiaotou community, Fuhai street, Baoan district, Shenzhen, China

Tested by Amanda Chen
Reviewed by Apple Huang
Approved by John Liu



Amanda Chen
Apple Huang
John Liu

This test report may be reproduced in full only
Test result presented in this test report is applicable to the tested sample only

Report Revision History			
Report No.	Report Version	Description	Issue Date
19ITC0805012F	NONE	Original	--

Customer information	
Applicant Name	Shenzhen Hui Qi Mei Technology Co., Ltd
Applicant Address	4B, Area A, Zhong tian xin, No.4, Longping West Road, Longcheng Street, Longgang District, Shenzhen
Manufacturer Name	Shenzhen Hui Qi Mei Technology Co., Ltd
Manufacturer Address	4B, Area A, Zhong tian xin, No.4, Longping West Road, Longcheng Street, Longgang District, Shenzhen

Test site information	
Lab performing tests	Shenzhen ITC Product Testing Co., Ltd.
Lab Address	Room 502, Floor 5, Fuong buliding, No. 3, Dayang road, Qiaotou community, Fuhai street, Baoan district, Shenzhen, China
Telephone:	(86)-0755-33138690
Fax:	(86)-0755-23071003
Abbreviations: OK/P=passed fail/F=failed n.a/N=not applicable E.U.T=equipment under test	

TABLE OF CONTENTS

Test Report Declaration	Page
1. GENERAL PRODUCT INFORMATION.....	4
1.1. Product Function.....	4
1.2. Description of Device (EUT).....	4
1.3. Difference between Model Numbers.....	4
2. TEST SITES.....	5
2.1. Test Facilities.....	5
2.2. Test Summary.....	5
2.3. List of Test and Measurement Instruments.....	6
3. TEST SET-UP AND OPERATION MODES.....	7
3.1. Principle of Configuration Selection.....	7
3.2. Block Diagram of Test Set-up.....	7
3.3. Test Operation Mode and Test Software.....	7
3.4. Special Accessories and Auxiliary Equipment.....	7
3.5. Countermeasures to Achieve EMC Compliance.....	7
4. TEST RESULTS.....	8
4.1. Conducted Emission at the Mains Terminals Test.....	8
4.2. Radiated Emission Test (below 1 GHz).....	9
4.3. Radiated Emission Test (above 1 GHz).....	12
5. PHOTOGRAPHS OF THE EUT.....	14



1. GENERAL PRODUCT INFORMATION

1.1.Product Function

Refer to Technical Construction Form and User Manual.

1.2.Description of Device (EUT)

Description : Mountain Humidifier

M/N : SLHM0

Power Supply : DC 5.0V, 3W

The basic operation mode is:

Pretest Mode	Description
Mode 1	Working

1.3.Difference between Model Numbers

The models differ only in type, but all others are the same

2. TEST SITES

2.1. Test Facilities

Name of Fir : Shenzhen iTC Product Testing Co., Ltd.

Site Location : Room 502, Floor 5, Fuong buliding, No. 3, Dayang road, Qiaotou community, Fuhai street, Baoan district, Shenzhen, China

2.2. Test Summary

Test Item	Condition	Standard	Result
Conducted disturbance at mains terminals	150kHz to 30MHz	FCC Part 15, Subpart B: 2016 ANSI C63.4:2014	N/A
Radiated Emission (below 1 GHz)	30MHz to 1GHz	FCC Part 15, Subpart B: 2016 ANSI C63.4:2014	Pass
Radiated Emission (above 1 GHz)	Above 1GHz	FCC Part 15, Subpart B: 2016 ANSI C63.4:2014	N/A
Remark: 1. The symbol "N/A" in above table means <u>Not Applicable</u> . 2. When determining the test results, measurement uncertainty of tests has been considered.			

System Measurement Uncertainty	
Test Items	Extended Uncertainty
Uncertainty for Radiated Emission in 3m chamber	3.60dB
Uncertainty for Conducted Emission.	2.60dB

2.3.List of Test and Measurement Instruments

Equipment	Manufacturer	Model No.	Serial No.	Last Cal.	Next Cal.
For conducted emission at the mains terminals and load port test					<input type="checkbox"/>
EMI Test Receiver	Rohde&Schwarz	ESCI	101156	July 09, 2019	July 08,2020
Artificial Mains Network	Rohde&Schwarz	ENV216	101315	July 09, 2019	July 08,2020
Artificial Mains Network (AUX)	Rohde&Schwarz	ENV216	101314	July 09, 2019	July 08,2020
RF Cable	FUJIKURA	3D-2W	944 Cable	July 09, 2019	July 08,2020
Voltage Probe	CHWARZBECK	A130302	KWE-053	July 09, 2019	July 08,2020
For radiated emission test (Below 1GHz)					<input checked="" type="checkbox"/>
EMI Test Receiver	Rohde&Schwarz	ESCI	101156	July 09, 2019	July 08,2020
Bilog Antenna	ETS-LINDGREN	3142D	00135452	July 09, 2019	July 08,2020
Spectrum Analyzer	Agilent	8593E	3911A04271	July 09, 2019	July 08,2020
3m Semi-anechoic Chamber	ETS-LINDGREN	966	170326	July 09, 2019	July 08,2020
Signal Amplifier	SONOMA	310	186956	July 09, 2019	July 08,2020
RF Cable	IMRO	IMRO-400	966 Cable 1#	July 09, 2019	July 08,2020
MULTI-DEVICE Controller	ETS-LINDGREN	2090	126913	N/A	N/A
Antenna Holder	ETS-LINDGREN	2070B	00109601	N/A	N/A
For radiated emission test (Above 1GHz)					<input type="checkbox"/>
EMI Test Receiver	Rohde&Schwarz	ESCI	101156	July 09, 2019	July 08,2020
Horn Antenna	DAZE	ZN30701	11003	July 09, 2019	July 08,2020
Spectrum Analyzer	Agilent	8593E	3911A04271	July 09, 2019	July 08,2020
3m Semi-anechoic Chamber	ETS-LINDGREN	966	170326	July 09, 2019	July 08,2020
Signal Amplifier	ZHINAN	ZN3380C	11001	July 09, 2019	July 08,2020
RF Cable	IMRO	IMRO-400	966 Cable 1#	July 09, 2019	July 08,2020
MULTI-DEVICE Controller	ETS-LINDGREN	2090	126913	N/A	N/A
Antenna Holder	ETS-LINDGREN	2070B	00109601	N/A	N/A
Note: <input checked="" type="checkbox"/> Used <input type="checkbox"/> Not Used					

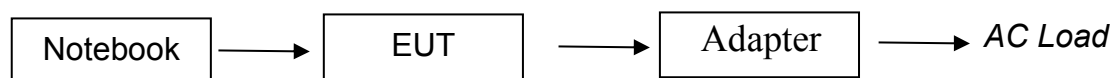
3. TEST SET-UP AND OPERATION MODES

3.1.Principle of Configuration Selection

Emission: The equipment under test (EUT) was configured to measure its highest possible radiation level. The test modes were adapted accordingly in reference to the Operating Instructions.

3.2.Block Diagram of Test Set-up

System Diagram of Connections between EUT and Simulators



(EUT: Car charger)

3.3.Test Operation Mode and Test Software

Refer to Test Setup in clause 4 & 5.

3.4.Special Accessories and Auxiliary Equipment

None.

3.5.Countermeasures to Achieve EMC Compliance

None.

4. TEST RESULTS

4.1. Conducted Emission at the Mains Terminals Test

Result : N/A
Test Site : 944 Shielded Room
Limits : FCC Part 15B

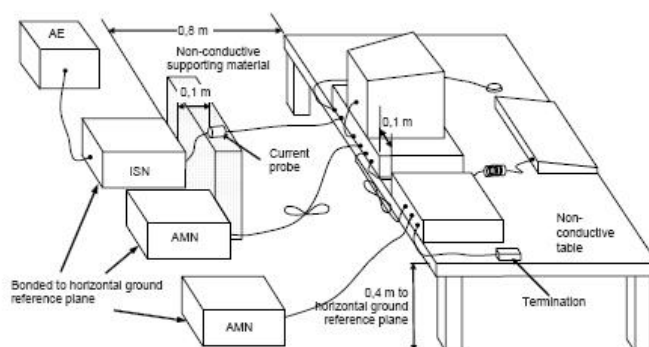
Frequency range MHz	Limits dB(μ V)	
	Quasi-peak	Average
0,15 to 0,50	66 to 56	56 to 46
0,50 to 5	56	46
5 to 30	60	50

NOTE: 1.The lower limit shall apply at the transition frequencies.
 2.The limit decreases linearly with the logarithm of the frequency in the range 0,15 MHz to 0,50 MHz.

Test

- 1.The EUT was put on a wooden table which was 0.8 m high above the ground and connected to the AC mains through the Artificial Mains Network (AMN). Where the mains cable supplied by the manufacture was longer than 1 m, the excess was folded back and forth parallel to the cable at the centre so as to form a bundle no longer than 0.4 m.
- 2.The EUT was kept 0.4 m from any other earthed conducting surface. Both sides of AC line were checked to find out the maximum conducted emission levels according to the test procedure during the conducted emission test.
- 3.The bandwidth of the test receiver was set at 9 kHz.
- 4.The worst test data was reported on the following page.

Test Set-up



4.2. Radiated Emission Test (below 1 GHz)

Result : **PASS**
Test Site : 966 Chamber
Limits : FCC Part 15B

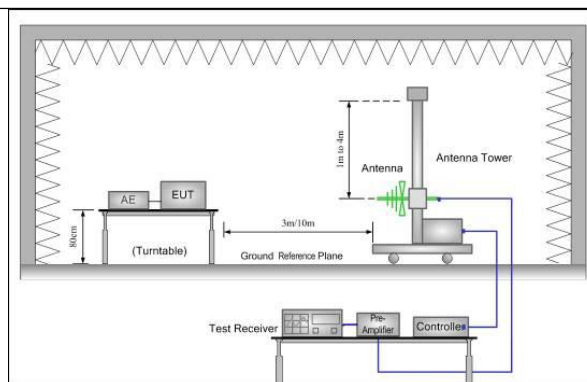
Frequency range MHz	Quasi-peak limits 3m dB(μ V/m)
30-88	40
88-216	43.5
216-960	46
960-1000	54

Note: 1. The lower limit shall apply at the transition frequency.
 2. Additional provisions may be required for cases where interference occurs.

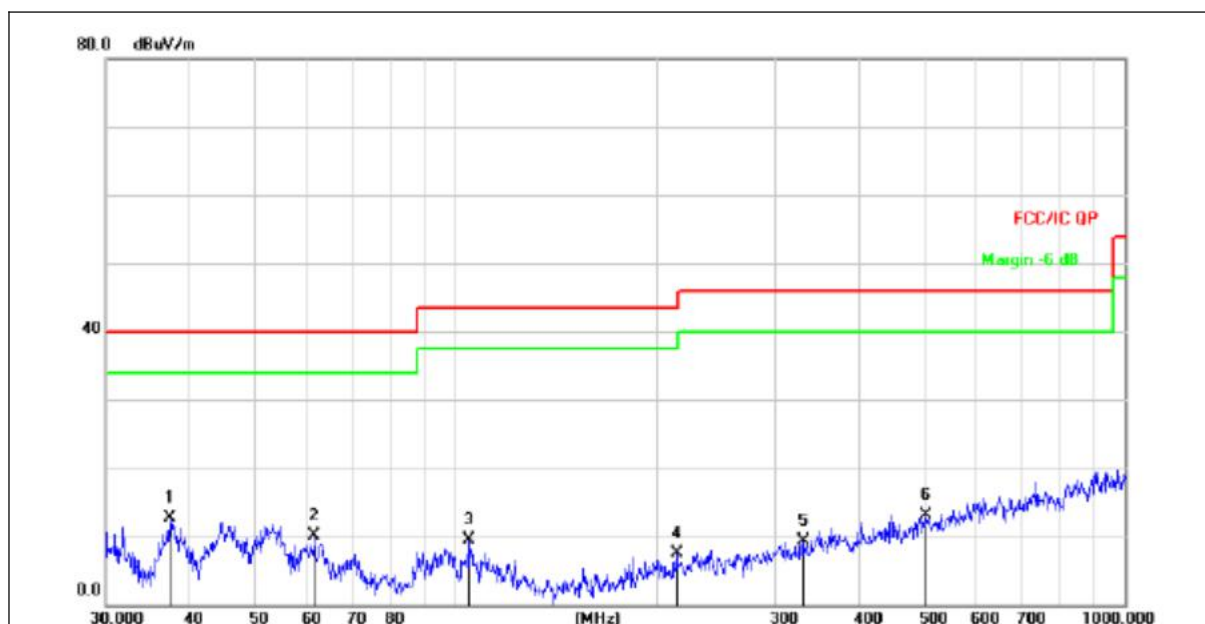
Conditional testing procedure

1. The EUT was placed on a turn table which was 0.8 m above the ground. The turn table can rotate 360 degrees to determine the position of the maximum emission level. The EUT was set 3 m away from the receiving antenna which was mounted on an antenna tower. The measuring antenna moved up and down to find out the maximum emission level. It moved from 1 m to 4 m for both horizontal and vertical polarizations.
2. The highest frequency of the internal sources of the EUT is less than 108 MHz, the measurement shall only be made up to 1 GHz.
2. The EUT was tested in the Chamber Site. It was pre-scanned with a Peak detector from the spectrum, and all the final readings from the test receiver were measured with the Quasi-Peak detector.
3. The bandwidth setting on the test receiver was 120 kHz.
4. The worst test data was reported on the following page.
5. Emission Level = Antenna Factor + Cable Loss + Meter Reading - Preamp Factor.

Test Set-up



EUT :	Mountain Humidifier	Model Name. :	SLHM0
Temperature :	24 °C	Relative Humidity :	54%
Pressure :	1010 hPa	Polarization :	Horizontal
Test Voltage :	DC 5.0V from USB port	Test Mode :	Working

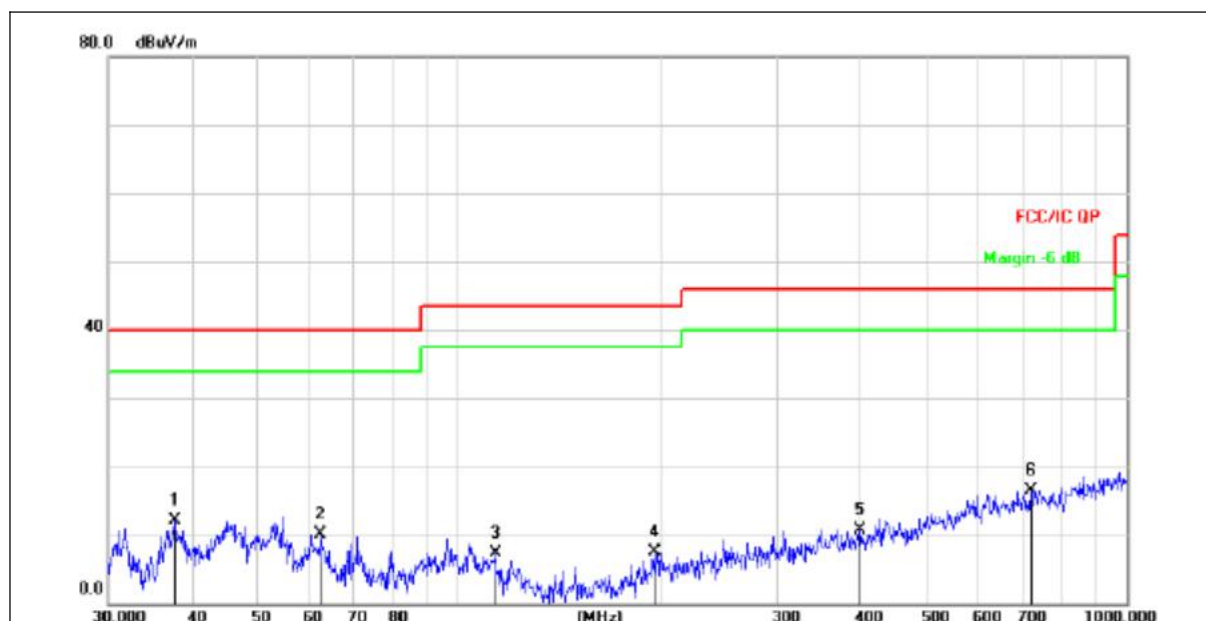


Remark:

1. All readings are Quasi-Peak and Average values.
2. Margin = Result (Result = Reading + Factor)-Limit

No.	Mk.	Freq. MHz	Reading Level dBuV	Correct Factor dB	Measure- ment dBuV/m	Limit dB/m	Over dB	Antenna Height cm	Table Degree	Comment
1	*	37.4165	28.32	-15.64	12.68	40.00	-27.32	QP		
2		61.5618	26.09	-15.90	10.19	40.00	-29.81	QP		
3		104.9033	25.19	-15.64	9.55	43.50	-33.95	QP		
4		213.7634	23.73	-16.20	7.53	43.50	-35.97	QP		
5		330.1949	22.72	-13.35	9.37	46.00	-36.63	QP		
6		502.9395	22.42	-9.26	13.16	46.00	-32.84	QP		

EUT :	Mountain Humidifier	Model Name. :	SLHM0
Temperature :	24 °C	Relative Humidity :	54%
Pressure :	1010 hPa	Polarization :	Vertical
Test Voltage :	DC 5.0V from USB port	Test Mode :	Working



Remark:

1. All readings are Quasi-Peak and Average values.
2. Margin = Result (Result = Reading + Factor)-Limit

No.	Mk.	Freq.	Reading Level	Correct Factor	Measurement	Limit	Over	Antenna Height	Table Degree	Comment
		MHz	dBuV	dB	dBuV/m	dB/m	dB	cm	degree	
1	*	37.8121	27.54	-15.50	12.04	40.00	-27.96	QP		
2		62.4314	26.22	-16.08	10.14	40.00	-29.86	QP		
3		113.7143	23.77	-16.37	7.40	43.50	-36.10	QP		
4		196.5098	24.02	-16.56	7.46	43.50	-36.04	QP		
5		399.0302	22.71	-12.00	10.71	46.00	-35.29	QP		
6		719.1995	21.69	-5.13	16.56	46.00	-29.44	QP		

4.3. Radiated Emission Test (above 1 GHz)

Result : N/A
Test Site : 966 Chamber
Limits : FCC Part 15B

Frequency range GHz	Average limit dB(μ V/m)	Peak limit dB(μ V/m)
1-3	50	70
3-6	54	74

Note: The lower limit applies at the transition frequency

Conditional testing procedure

1. The EUT was placed on a turn table which was 0.8 m above the ground. The turn table can rotate 360 degrees to determine the position of the maximum emission level. The EUT was set 3 m away from the receiving antenna which was mounted on an antenna tower. The measuring antenna moved up and down to find out the maximum emission level. It moved from 1 m to 4 m for both horizontal and vertical polarizations.

2. The EUT was tested in the 3m Chamber Site. It was pre-scanned with a Peak detector from the spectrum.

3. The bandwidth setting on the test receiver was 1 MHz.

4. The worst test data was reported on the following page.

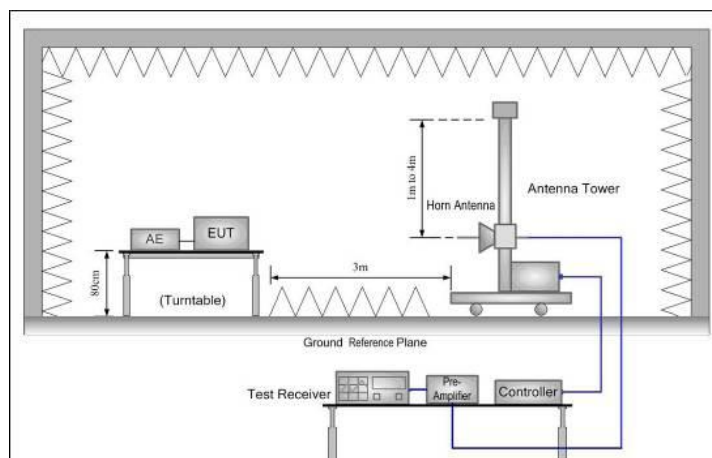
5. Emission Level = Antenna Factor + Cable Loss + Meter Reading - Preamp Factor.

☐ the highest frequency of the internal sources of the EUT is between 108 MHz and 500 MHz, the measurement shall only be made up to 2 GHz.

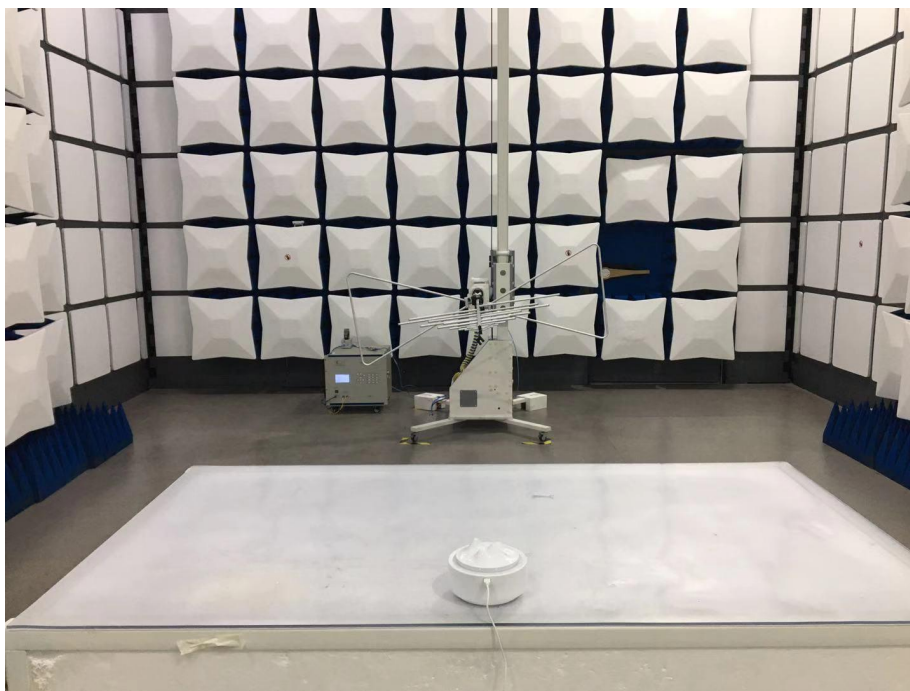
☐ the highest frequency of the internal sources of the EUT is between 500 MHz and 1 GHz, the measurement shall only be made up to 5 GHz.

☐ the highest frequency of the internal sources of the EUT is above 1 GHz, the measurement shall be made up to 5 times the highest frequency or 40 GHz, whichever is lower.

Test Set-up



TEST PHOTO

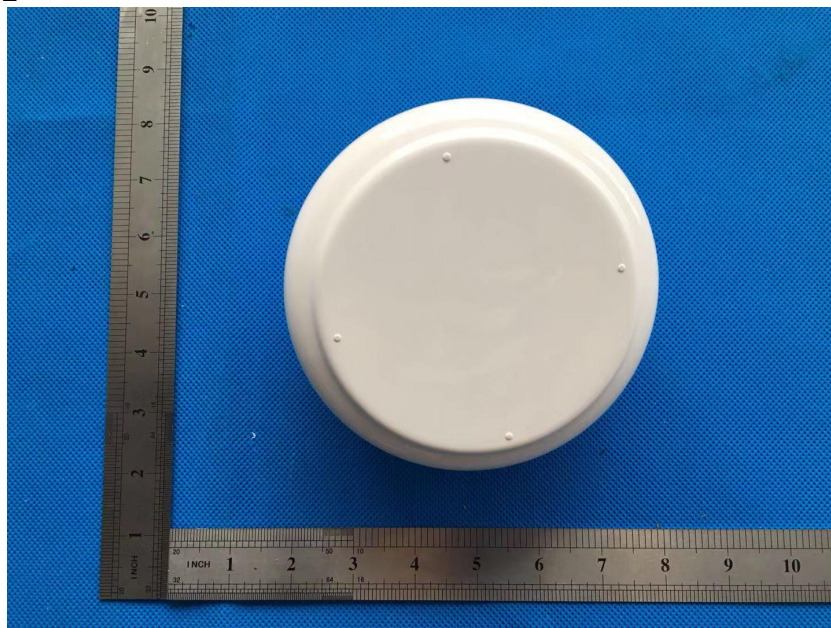


5. PHOTOGRAPHS OF THE EUT

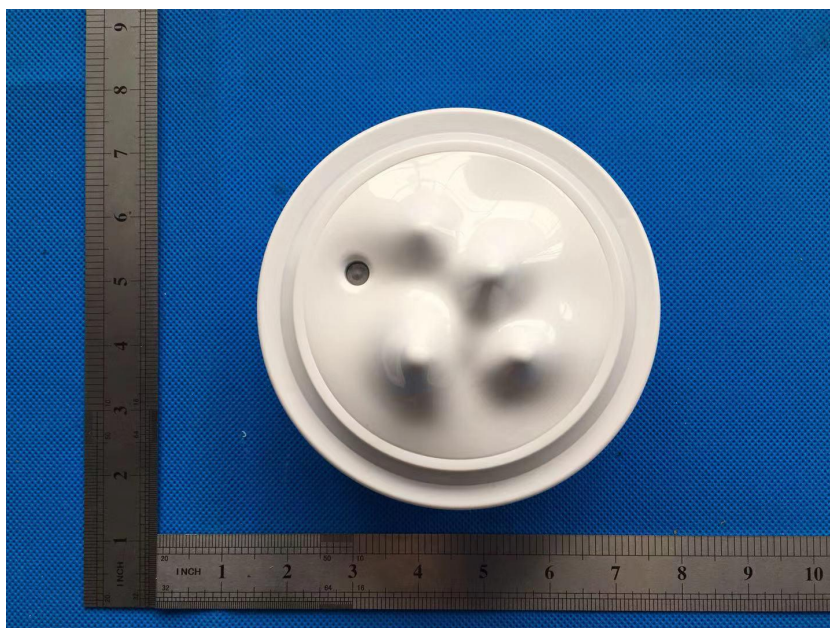
EUT Photo 1



EUT Photo 2



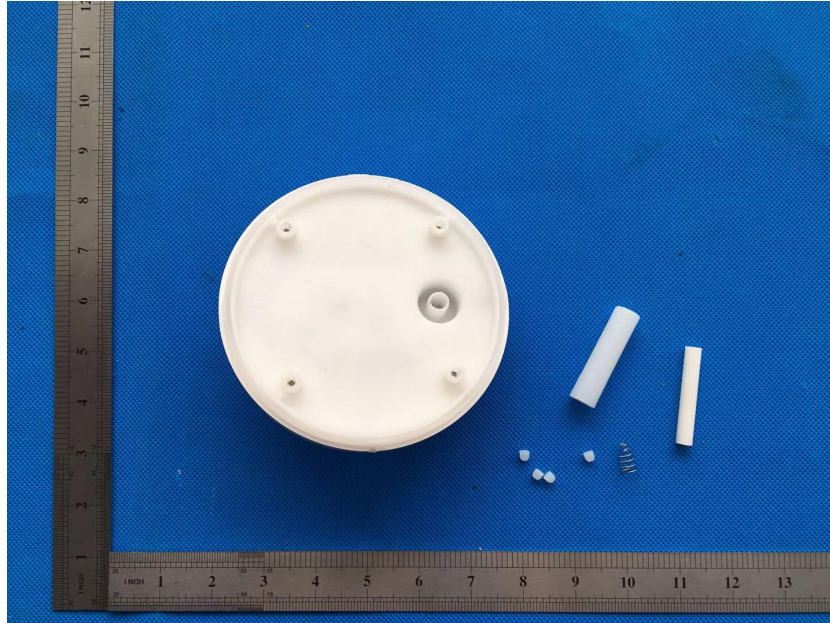
EUT Photo 3



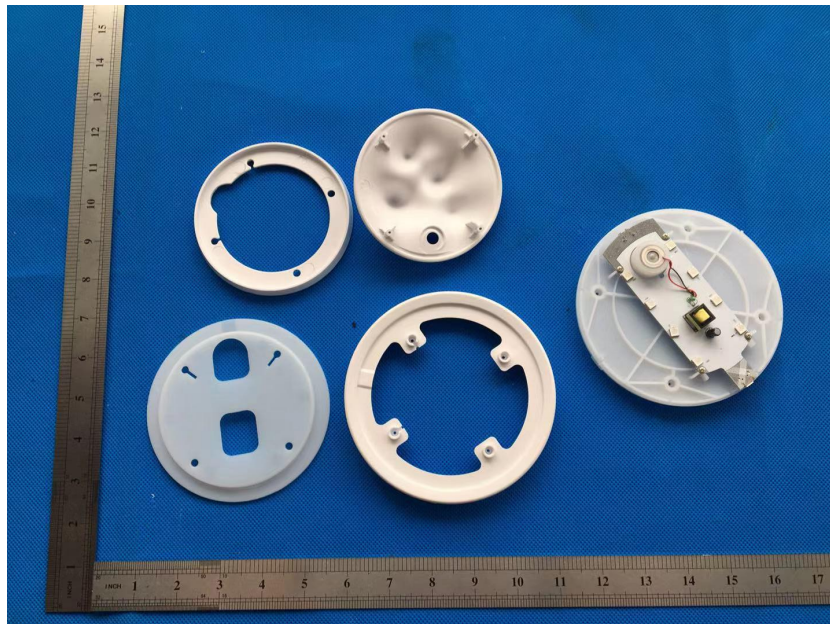
EUT Photo 4



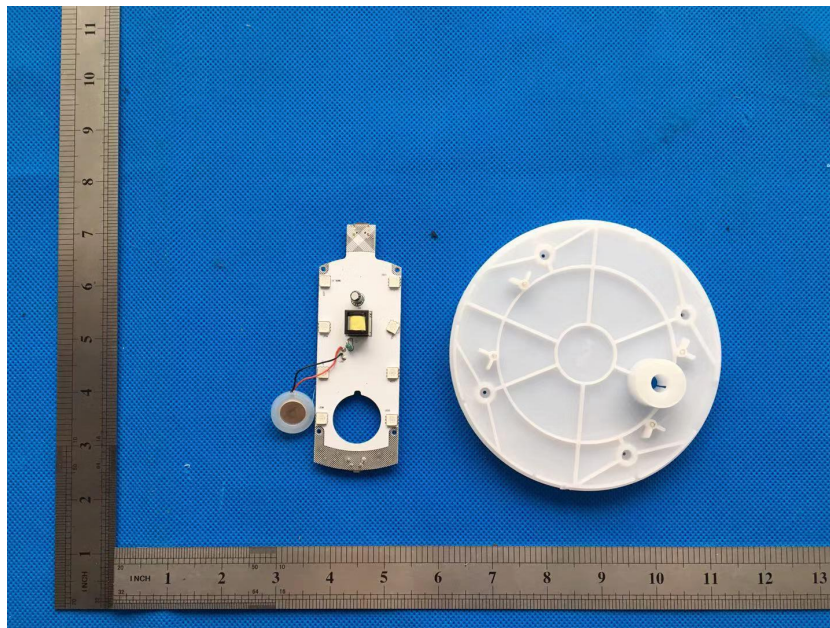
EUT Photo 5



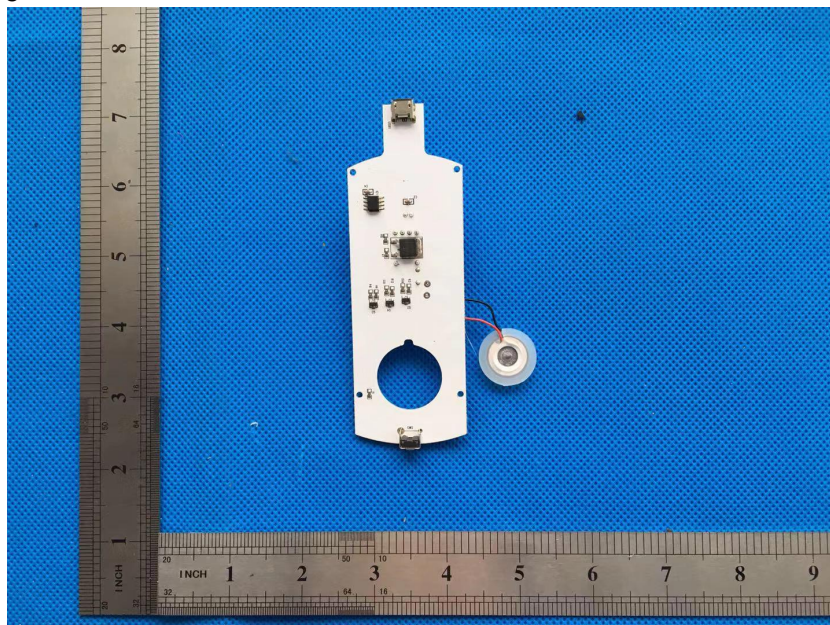
EUT Photo 6



EUT Photo 7



EUT Photo 8



*the end of report***